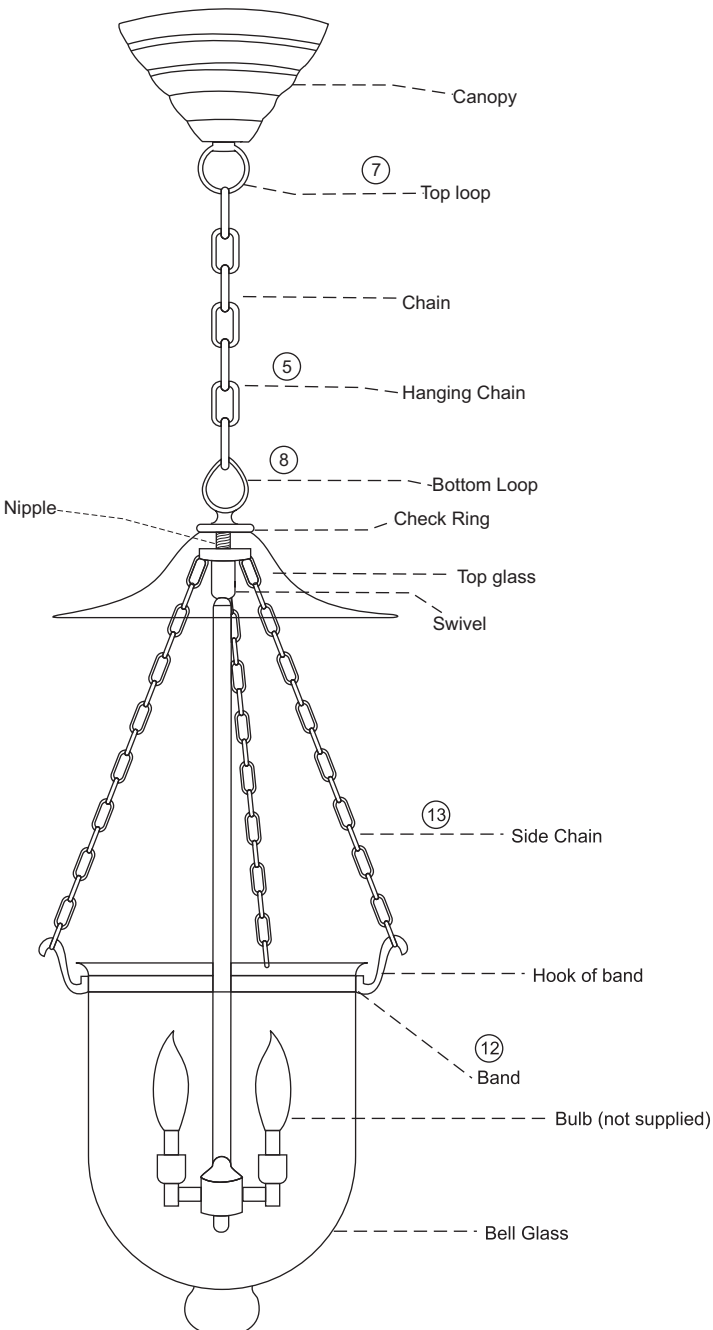
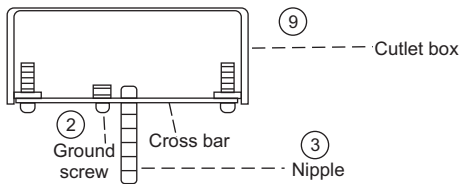


## Assembly Instruction for 1021/1023/1025

We recommend installation of this fixture be done by a licensed electrician. Turn off power at the main fuse or circuit breaker box.

\*\* Actual parts may vary slightly depending upon the model



1. Remove all parts carefully from the box before discarding the carton.
2. Attach the cross bar to the outlet box with ground screw facing down.
3. Insert the nipple into the cross bar.
4. Adjust nipple coming out of the cross bar so that it is  $\frac{1}{4}$ " out of the canopy.
5. Remove excess chain link from hanging chain. Measure 6" of lead wire beyond the end of hanging chain.
6. Attach top loop to canopy using nipple.
7. Slip lead & ground wire through side chain holder, top glass, check ring & bottom loop screwed in using nipple.
8. Attach assembled top glass to the hanging chain.
9. Thread lead wire and ground wire through the chain, top loop and nipple through the outlet box.
10. If applicable, Fasten ground wire to green screw.
11. Fasten lead wire with ridges to the white wire. Use wire nut to fasten it. Fasten smooth lead wire to the black wire in the box & use wire nut to fasten it.
12. Place the band on the neck of the bell glass.
13. After installation of bulbs, attach bell glass to 3 side chains to the hook of the band.
14. Restore circuit breaker.